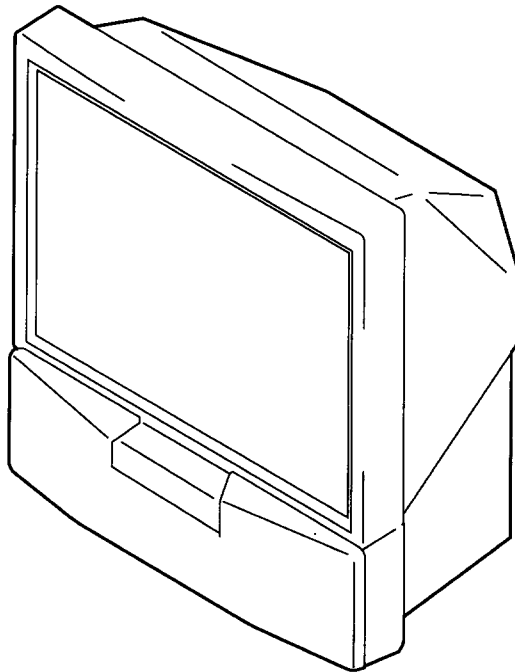
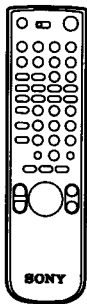


# SERVICE MANUAL

# RE-2 CHASSIS

<u>MODEL</u>	<u>COMMANDER</u>	<u>DEST.</u>	<u>CHASSIS NO.</u>	<u>MODEL</u>	<u>COMMANDER</u>	<u>DEST.</u>	<u>CHASSIS NO.</u>
KP-41S4	RM-862	AEP	SCC-N61A-A	KP-41S4K	RM-862	OIRT	SCC-N62A-A
KP-41S4B	RM-862	French	SCC-N63A-A	KP-41S4R	RM-862	Russ	SCC-N62B-A
KP-41S4G	RM-862	Greek	SCC-N60B-A	KP-41S4U	RM-862	UK	SCC-N61A-A

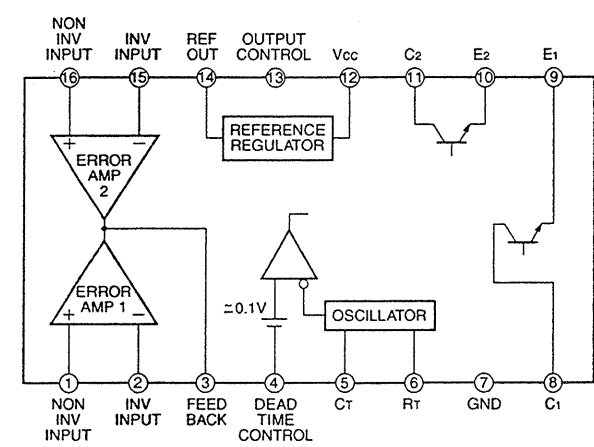


\* Please file according to model size. ....

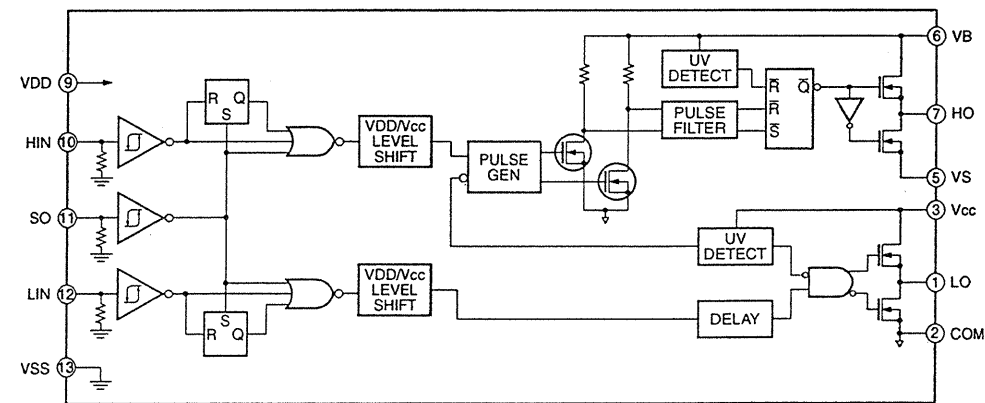
41

PROJECTION TV  
**SONY**®

**G BOARD : IC6004 IR3M02**



**G BOARD : IC6007 IR2112**



**G BOARD IC VOLTAGE LIST**

REF.	NO.	VOL.
● IC6001	1	GND
● IC6001	2	GND
● IC6001	3	GND
● IC6001	4	5.9
● IC6001	5	296.0
● IC6001	8	GND
● IC6004	1	3.9
● IC6004	2	4.8
● IC6004	4	GND
● IC6004	5	1.7
● IC6004	6	3.9
● IC6004	7	GND
● IC6004	8	14.1
● IC6004	9	5.8
● IC6004	10	6.4
● IC6004	11	14.4
● IC6004	12	14.5
● IC6004	13	5.3
● IC6004	14	5.3
● IC6004	15	5.3
● IC6004	16	GND
● IC6005	1	7.0
● IC6005	2	5.8
● IC6005	3	13.5
● IC6005	4	13.8
● IC6006	1	14.0
● IC6006	2	13.0
● IC6006	3	GND
● IC6006	4	3.0
● IC6007	1	6.2
● IC6007	2	GND
● IC6007	3	14.5
● IC6007	4	147.0
● IC6007	5	147.0
● IC6007	6	159.0
● IC6007	7	150.0
● IC6007	9	14.5
● IC6007	10	6.4
● IC6007	11	GND
● IC6007	12	5.8
● IC6007	13	GND
● IC6008	1	134.5
● IC6008	2	12.5
● IC6008	3	GND

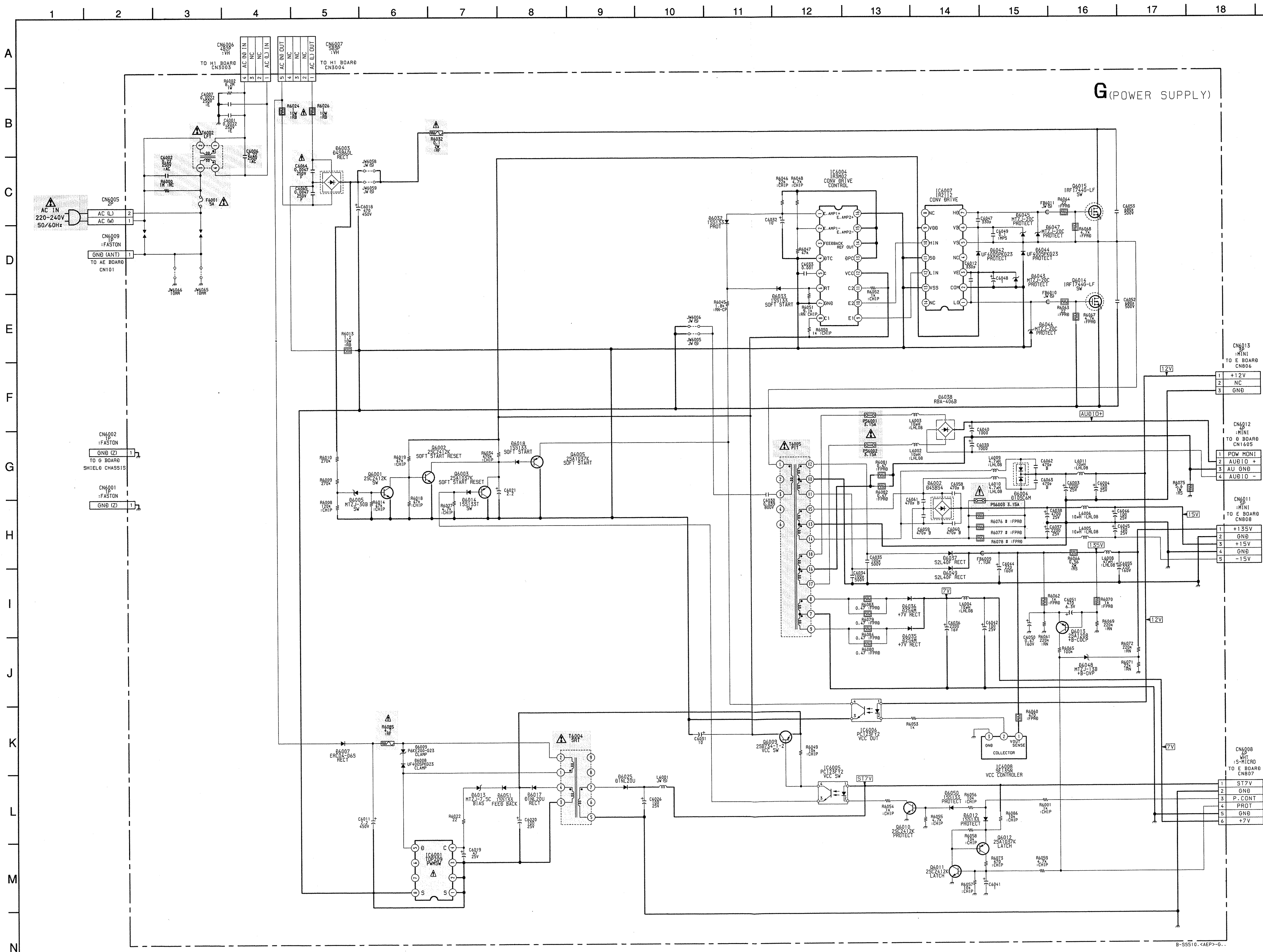
\*All voltage are in V.  
\*Pin numbers which are not described are not used.  
● The figures in the parentheses are the voltage difference from primary side ground.

**G BOARD TRANSISTOR VOLTAGE LIST**

REF.	VOL.
● Q6001	B 0.8
● Q6001	E GND
● Q6001	C 0
● Q6002	B 0
● Q6002	E GND
● Q6002	C 13.8
● Q6003	B *
● Q6003	E 13.8
● Q6003	C GND
● Q6005	B 0.7
● Q6005	E 3.0
● Q6005	C GND
● Q6009	B 13.8
● Q6009	E 14.5
● Q6009	C 14.5
● Q6010	B 0.7
● Q6010	E GND
● Q6010	C 0.1
● Q6011	E GND
● Q6011	B 7.0
● Q6012	E 7.0
● Q6012	B 134.8
● Q6012	C 0
● Q6013	E 135.1
● Q6013	G 4.1
● Q6014	D 147.0
● Q6014	S GND
● Q6015	G 150.0
● Q6015	S 292.0
● Q6015	S 147.0

All voltages are in V.  
The figures in the parentheses are the voltage difference from primary side ground.

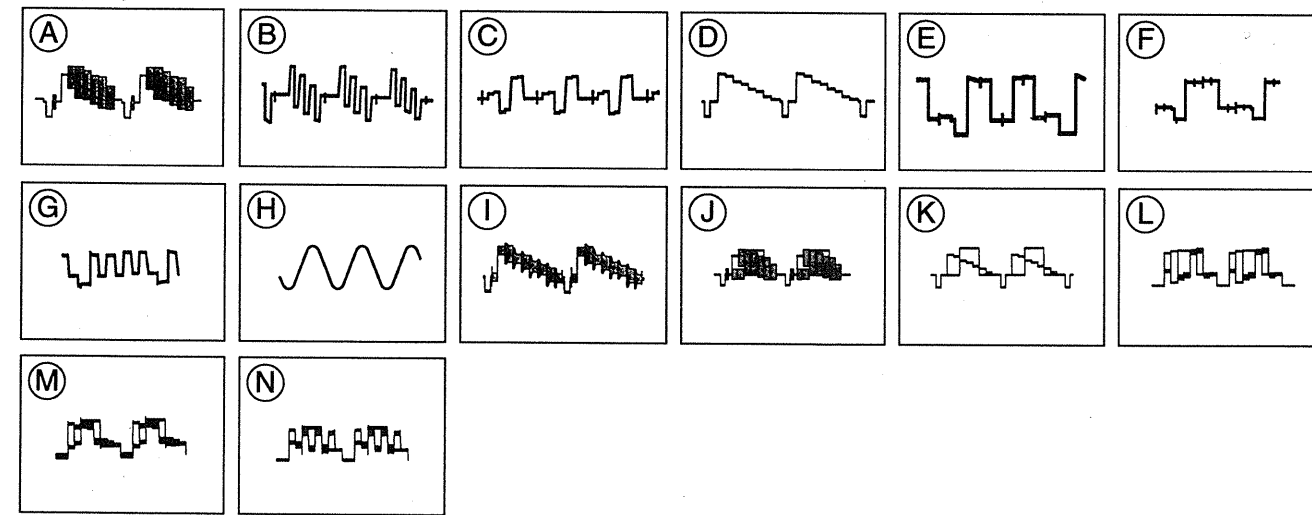
Schematic diagram  
G board →







• AE(2/2) BOARD WAVEFORMS



• WAVEFORMS AE(2/2) BOARD

CIRCUIT WAVEFORM REFERENCE		PAL	SECAM	NTSC
1	A	1.70Vp-p(0.8)	I 1.70Vp-p(0.8)	J 1.80Vp-p(0.9)
2	C	0.6Vp-p(0.3)	C 1.0Vp-p(0.5)	C 0.4Vp-p(0.2)
3	B	0.6Vp-p(0.3)	B 1.5Vp-p(0.7)	B 0.4Vp-p(0.2)
4	B	1.2Vp-p(0.6)	B 1.1Vp-p(0.5)	B 1.2Vp-p(0.6)
5	C	1.5Vp-p(0.7)	C 1.5Vp-p(0.7)	C 0.9Vp-p(0.4)
6	A	1.2Vp-p(0.6)	I 1.2Vp-p(0.6)	J 1.6Vp-p(0.8)
7	D	1.8Vp-p(0.9)	D 2.2Vp-p(1.1)	K 2.2Vp-p(1.1)
8	E	3.0Vp-p(1.5)	E 3.0Vp-p(1.5)	L 3.0Vp-p(1.5)
9	F	3.0Vp-p(1.5)	F 3.0Vp-p(1.5)	M 3.0Vp-p(1.5)
10	G	3.4Vp-p(1.7)	G 3.7Vp-p(1.8)	N 3.0Vp-p(1.5)
11	H	3.4Vp-p(1.7)	H 3.4Vp-p(1.7)	H 3.4Vp-p(1.7)
12	H	1.7Vp-p(0.8)	H 1.7Vp-p(0.8)	H 1.7Vp-p(0.8)

AE(2/2) BOARD IC VOLTAGE LIST

REF. NO.	VOL.	REF. NO.	VOL.	REF. NO.	VOL.		
IC1	2	0	4	GND	38	8.0	
	3	5.0	5	4.4+4.6	37	3.2	
	4	5.0	6	4.2+4.4	38	3.4	
	5	5.0	7	4.9	39	4.7	
	6	0	8	5.0	40	4.2	
	7	0.8	1	5.0	41	2.4	
	8	0.1	2	*	42	GND	
	9	0.1	3	*	43	1.8	
	10	0	4	*	44	8.9	
	11	1.8	5	1.9	45	2.5	
	12	GND	6	*	46	4.0	
	13	5.0	7	5.0	47	3.2	
	14	2.4	8	2.5	48	4.4	
	15	2.3	9	2.2	49	6.4	
	16	4.6(5.0)	10	2.5	50	4.5	
	17	1.7	11	2.5	51	3.9(4.5)	
	18	0	12	2.5	52	4.3(5.0)	
	19	3.0	13	2.1	53	4.0(4.2)	
	20	0	14	2.0	54	5.0	
	21	2.5(2.9)	15	2.1	55	4.0	
	22	1.0	16	GND	57	4.2	
	23	3.5(3.2)	17	1.8+1.7(1.9)	58	8.8	
	24	3.2	18	2.8	60	5.4+4.7(5.6)	
	25	2.2(1.6)	19	2.9	61	2.4(1.4)	
	26	2.4	20	2.7	62	7.4(5.9)	
	27	2.6	21	3.0	63	GND	
	28	3.5	22	GND	64	5.3	
	29	2.7	23	*	IC302	1	4.9
	30	2.7	24	GND	3	GND	
	31	2.6	25	*	4	GND	
	32	2.3	26	*	5	0.6	
	33	2.7	27	*	8	GND	
	34	2.6	28	*	9	2.6	
	35	2.6	29	0.9	10	GND	
	36	3.0	30	0	11	3.1	
	37	2.5	31	5.0	12	3.0	
	38	2.8	32	5.0	14	1.4	
	39	2.2	1	5.0	16	1.4	
	40	2.6	2	GND	IC303	1	1.6+4.9(1.2)
	41	0.9(2.1)	3	5.0	5	5.1	
	42	5.0(3.0)	4	GND	6	GND	
	43	2.6(2.1)	1	1.6+4.9(1.6)	9	3.5(3.2)	
	44	4.2(1.7)	2	GND	10	3.3	
	50	GND	3	5.7+3.0(5.7)	11	5.7+3.0(5.7)	
	51	5.0	4	5.7+3.0(5.7)	12	5.7+3.0(5.7)	
	52	0	5	3.7	19	0.7	
	53	0	6	5.0	20	3.6	
	54	1.9	7	5.5	4	0.9	
	55	0.8	8	5.5	5	1.3	
	56	0(4.5)	9	GND	6	1.6	
	57	0(4.4)	10	0.7	7	1.8	
	58	0.6(1.5)	11	0.1	9	GND	
	60	5.0(2.3)	12	5.5	10	0(1.1)	
	61	0	13	5.5	11	4.8	
	62	3.9	14	5.5	12	4.8	
	63	4.6	15	0	13	GND	
	64	0.6(1.1)	16	0	16	4.7	
	65	5.0	17	5.5	17	0.1	
	66	0	18	5.5	21	4.8	
	67	3.9(2.3)	19	5.5	23	2.9	
	68	GND	20	5.9	25	7	
	69	0	21	4.4	44	GND	
	70	0	22	1.8+2.0(1.8)	49	GND	
	71	0	23	4.4	55	GND	
	72	5.0	24	1.7+1.9(1.7)	56	0	
	73	4.9	25	4.9	58	GND	
	74	0(4.7)	26	1.6+1.9(1.8)	59	GND	
	75	5.0(4.6)	27	4.9(4.4)	60	GND	
	76	5.0(4.7)	28	4.4+2.8(3.5)	61	0	
	77	5.0(3.0)	29	8.8	62	0	
	78	0	30	0.6	63	0	
	79	0.8	31	3.0	64	0	
	80	5.0	32	3.0	66	4.3+4.8(4.7)	
	81	GND	33	4.1	67	4.9(4.7)	
	82	GND	34	4.0	68	3.5+3.0(3.0)	
	83	GND	35	4.6			

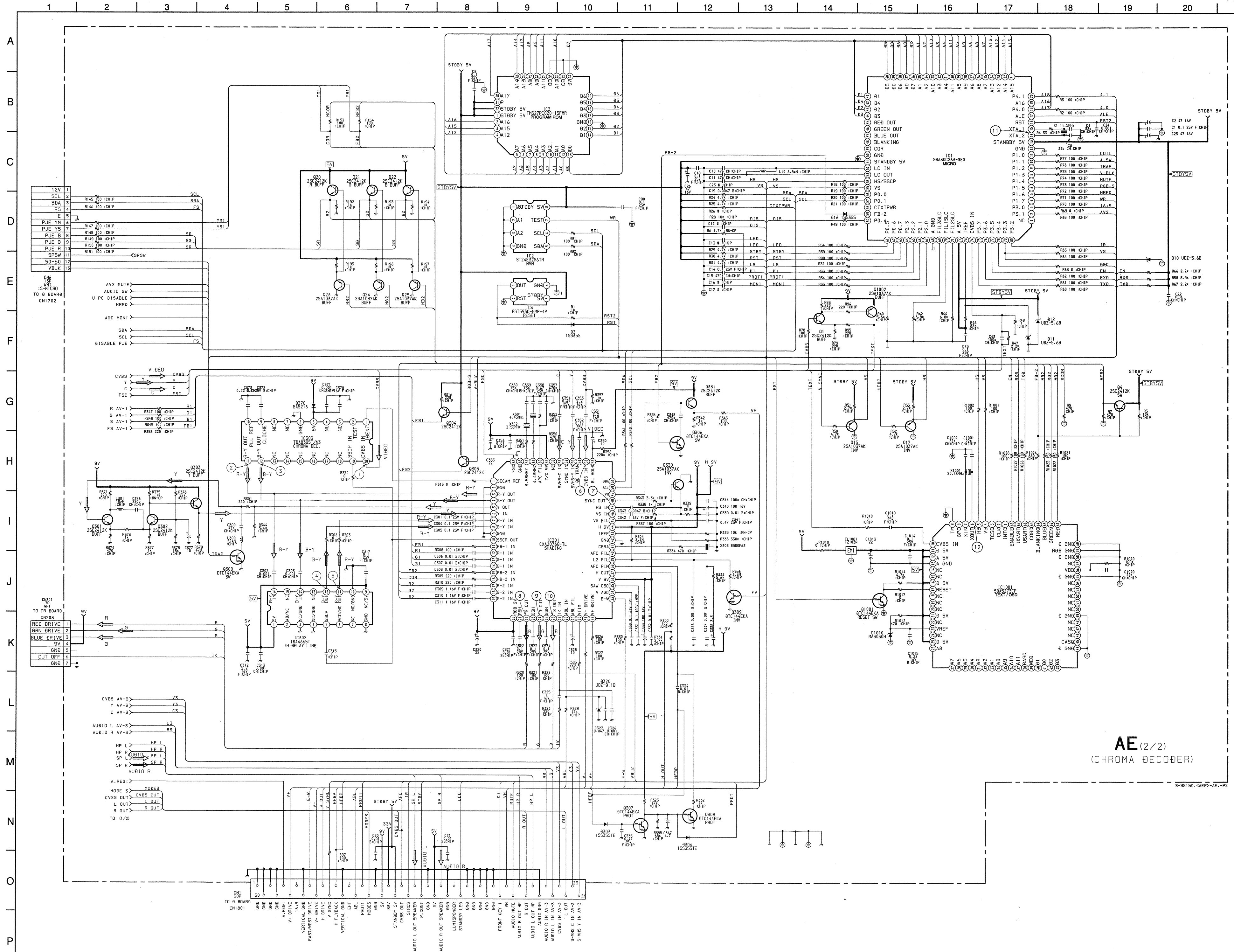
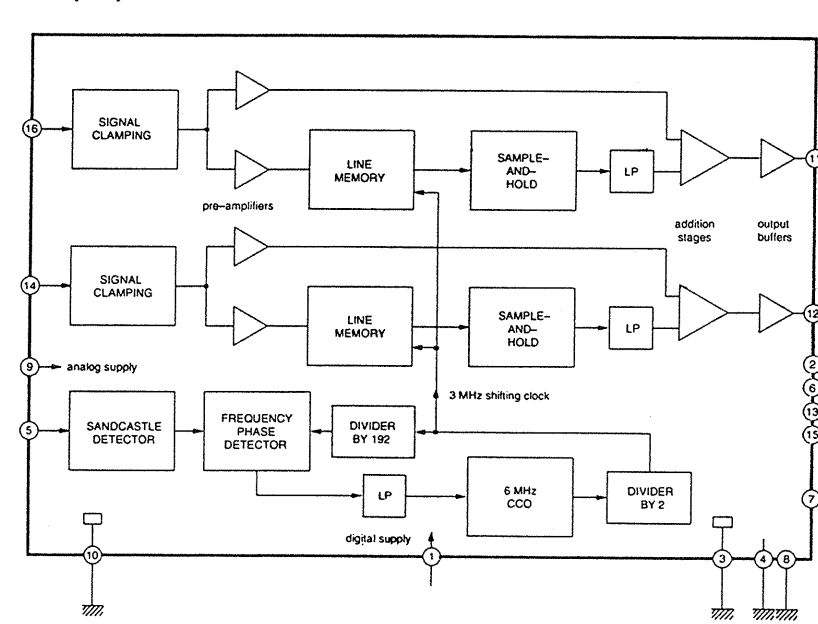
\*All voltage are in V.  
\*Can not measured.  
Pin numbers which are not described are not used.

AE(2/2) BOARD TRANSISTOR VOLTAGE LIST

REF.	VOL.	REF.	VOL.
Q1	B 3.6	Q302	B 3.6
	C 3.0		C 3.0
	C 8.2		C 5.7
	B 0.4		B 5.7
Q4	E 0	Q303	E 5.1
	C 5.0		C 8.9
	B 0.2		B 0
	E 0.8	Q304	E 0
	C GND		C 5.0
	B 0.7		B 0
Q17	E 1.4	Q306	E 0
	C GND		C 5.0
	B 0.7		B 0
	E 0.2	Q306	E GND
	C 4.9		C 0.2
Q21	B 0.7	Q307	B 0
	E 0.2		E GND
	C 0.7		C 0
Q22	E 0.2	Q308	E GND
	C 4.8		C 3.4
	B 0		B 0(4.9)
Q23	E 0.7	Q309	E GND
	C GND		C 3.6(0)
	B 0		B 0
	E 0.7	Q330	E 5.7
	C GND		C 8.9
Q24	B 0		B 6.4
	C GND		C GND
Q25	E 0.7	Q331	E 5.7
	C GND		C 8.9
	B 0		B 4.8
Q300	E GND	Q1001	E GND
	C 0		C 0.1
	B 3.7		B 8.3
Q301	E 3.0	Q1002	E 3.0
	C 7.5		C 5.3

All voltages are in V.

AE(2/2) BOARD : IC302 TDA4665T

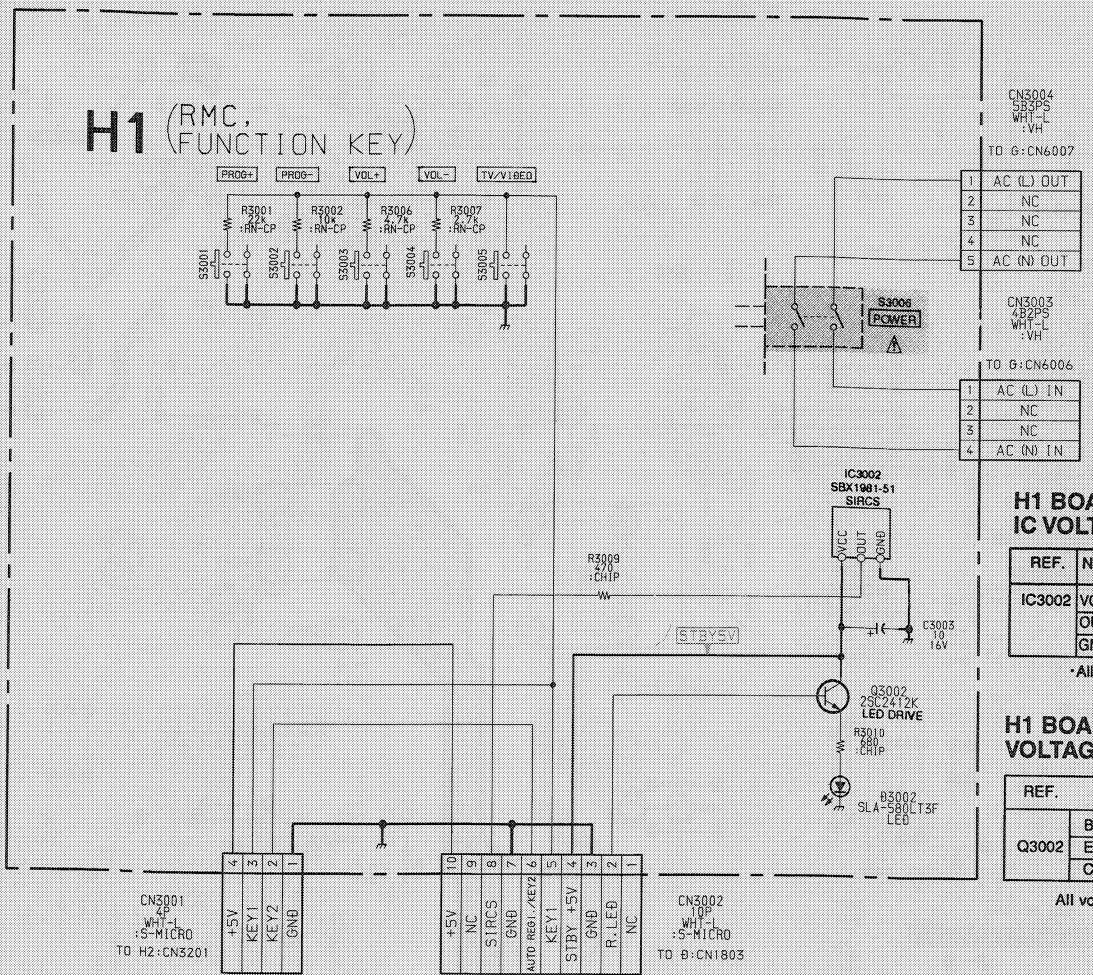


AE(2/2)  
(CHROMA RECOVER)

B-88150-CAEP-AE-2



A  
B  
C  
D  
E  
F  
G  
H  
I  
J



**H1 BOARD IC VOLTAGE LIST**

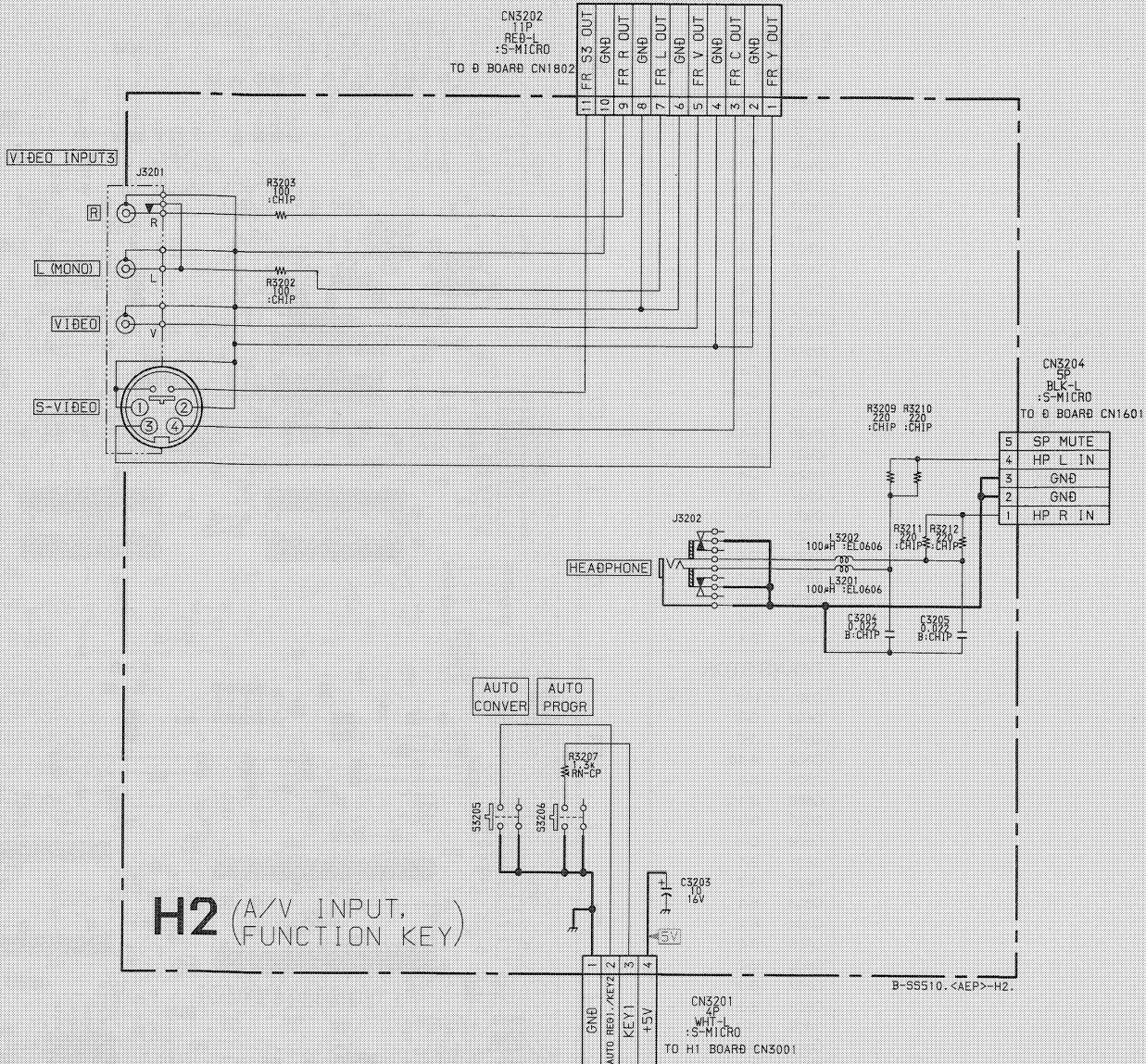
REF.	NO.	VOL.
IC3002	VCC	5.0
	OUT	5.0
	GND	GND

\*All voltage are in V.

**H1 BOARD TRANSISTOR VOLTAGE LIST**

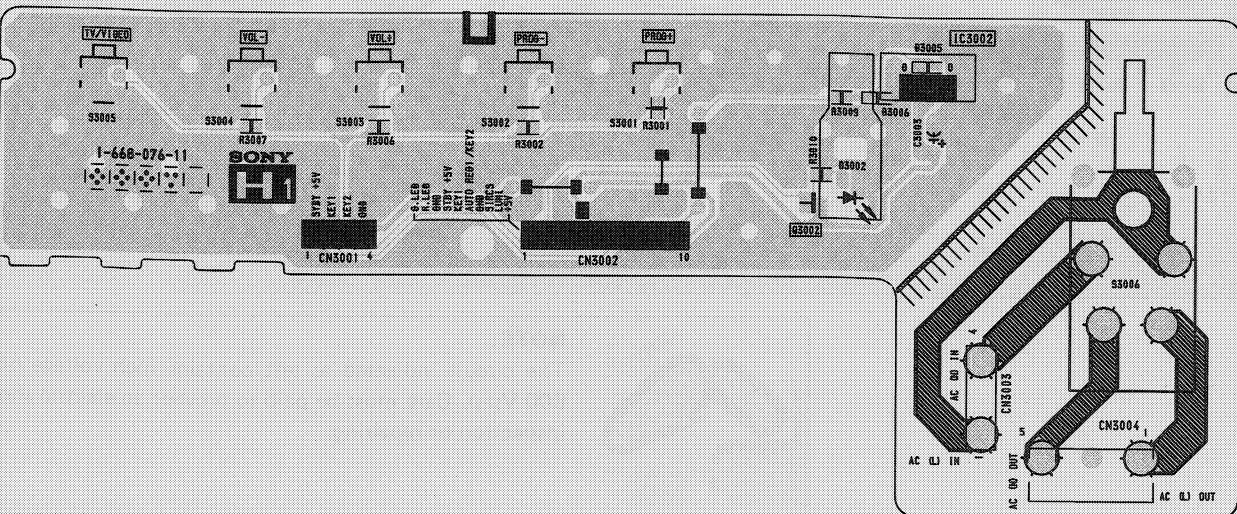
REF.	VOL.
Q3002	B 0.5
	E 0.1
	C 5.0

All voltages are in V.



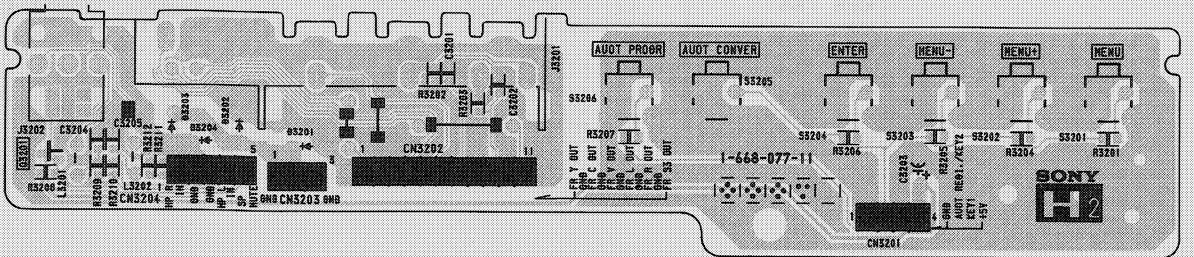
**H1** [FUNCTION KEY, RMC]

- H1 Board -



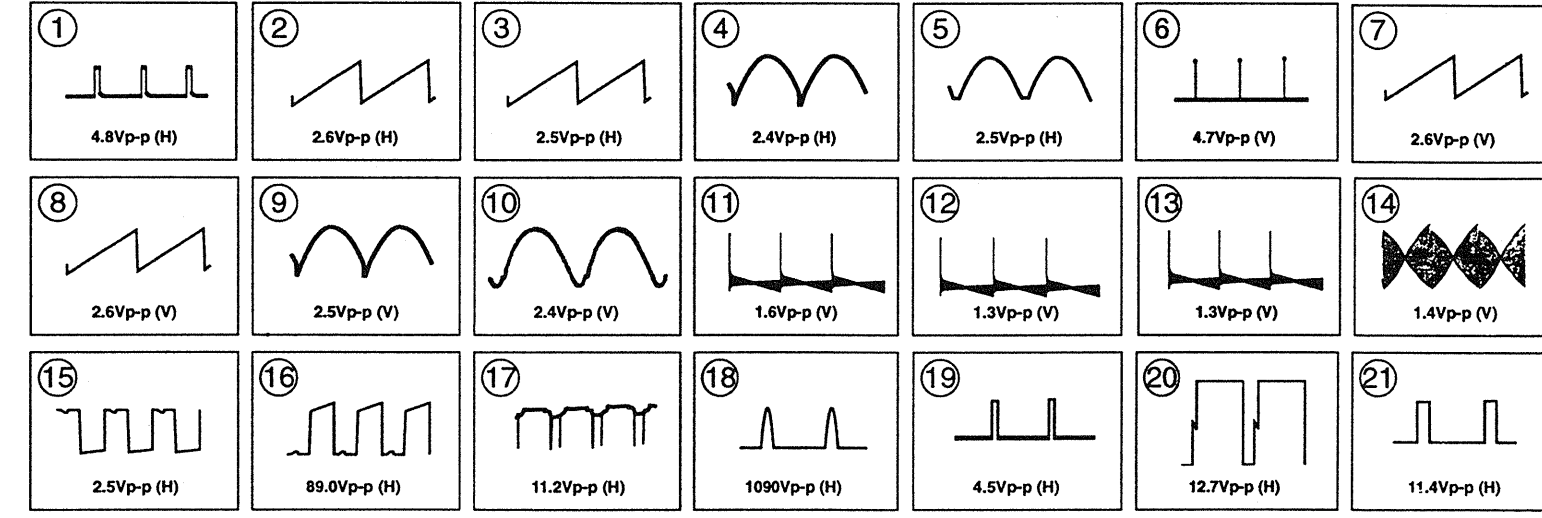
**H2** [AV INPUT, FUNCTION KEY]

- H2 Board -

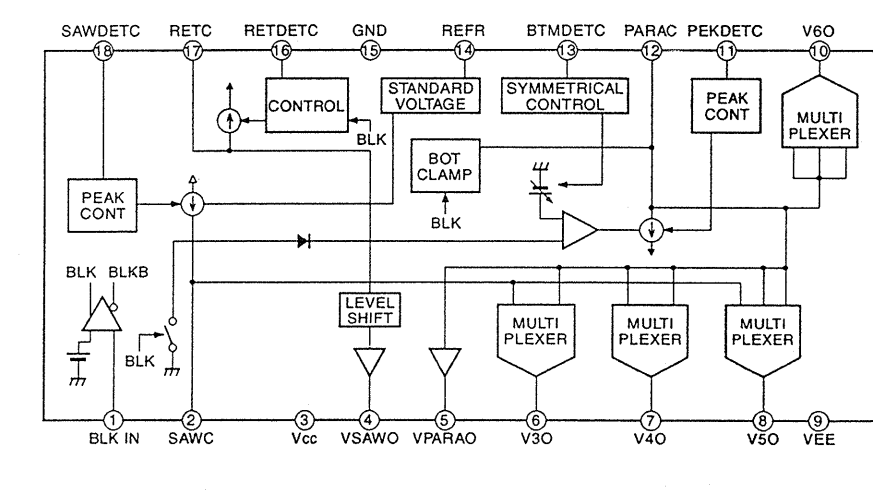




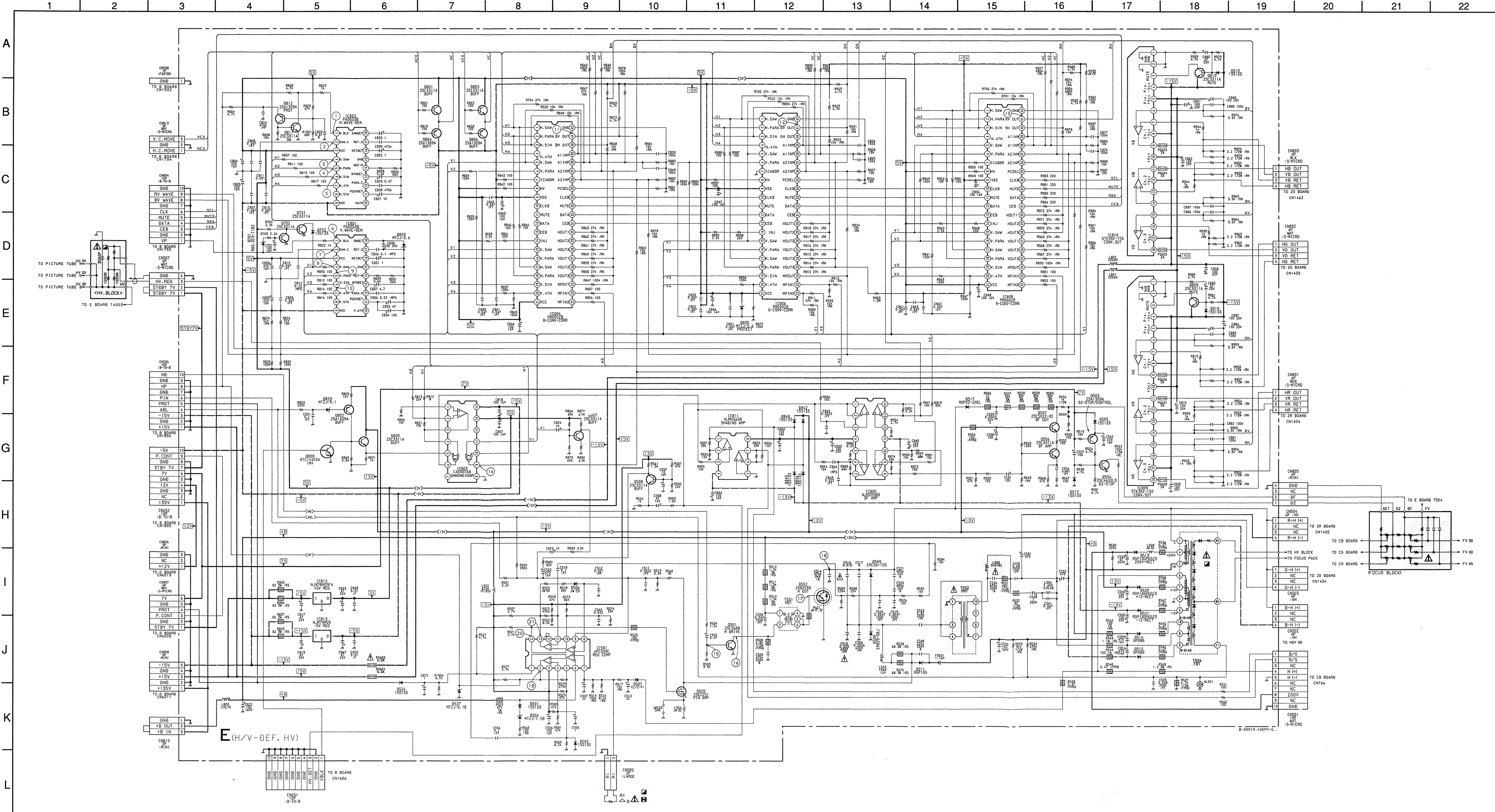
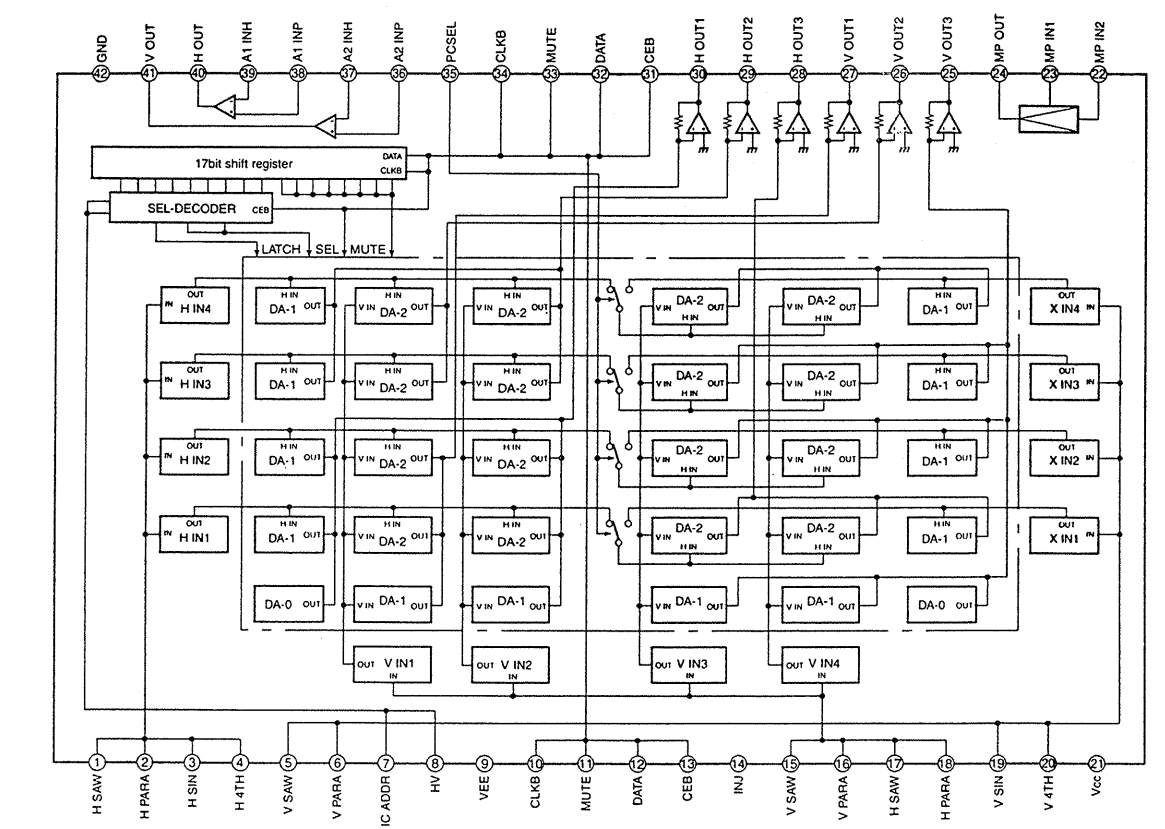
• E BOARD WAVEFORMS



E BOARD : IC801,802 PA0053B



E BOARD : IC804,806,808 PM0022B



E BOARD IC VOLTAGE LIST

REF.	NO.	VOL.	REF.	NO.	VOL.	REF.	NO.	VOL.
IC501	1	0.1	IC805	1	7.4	IC809	1	GND
IC501	2	0.7	IC805	2	7.4	IC809	2	-13.0
IC501	3	12.2	IC805	3	-0.4	IC809	3	-14.2
IC501	4	6.1	IC805	4	0	IC809	4	-14.2
IC501	5	1.8	IC805	5	-0.8	IC809	5	0
IC501	6	8.3	IC805	6	0	IC809	6	0
IC501	7	7.9	IC805	7	-1.1	IC809	7	0
IC501	8	1.6	IC805	8	-0.5	IC809	8	-14.2
IC501	9	2.5	IC805	9	-0.9	IC809	9	-14.2
IC501	10	4.5	IC805	10	0.3	IC809	10	0
IC501	11	1.8	IC805	11	5.0	IC809	11	0
IC501	12	GND	IC805	12	0.2	IC809	12	-14.2
IC501	13	1.6	IC805	13	0.2	IC809	13	-14.2
IC501	14	10.1	IC805	14	-2.0	IC809	14	-14.2
IC801	1	0.2	IC805	15	GND	IC809	15	0
IC801	2	1.1	IC805	16	-1.7	IC809	16	0
IC801	3	5.0	IC805	17	1.2	IC809	17	0.8
IC801	4	0	IC805	18	-1.5	IC809	18	-0.8
IC801	5	-0.8	IC805	19	0.1	IC809	19	0.1
IC801	6	0	IC805	20	-0.5	IC809	20	-0.5
IC801	7	-1.1	IC805	21	5.0	IC809	21	5.0
IC801	8	-0.5	IC805	22	0	IC809	22	0
IC801	9	-5.0	IC805	23	-0.4	IC809	23	-0.4
IC801	10	0.5	IC805	24	0.1	IC809	24	0.1
IC801	11	-0.9	IC805	25	0	IC809	25	0
IC801	12	-0.9	IC805	26	0.1	IC809	26	0.1
IC801	13	0.3	IC805	27	0	IC809	27	0
IC801	14	1.2	IC805	28	0.1	IC809	28	0.1
IC801	15	GND	IC805	29	0	IC809	29	0
IC801	16	-1.7	IC805	30	0.3	IC809	30	0.3
IC801	17	1.2	IC805	31	4.6	IC809	31	4.6
IC801	18	-1.5	IC805	32	0.2	IC809	32	0.2
IC802	1	0.4	IC805	33	5.0	IC809	33	5.0
IC802	2	1.1	IC805	34	4.7	IC809	34	4.7
IC802	3	5.0	IC805	35	0.1	IC809	35	0.1
IC802	4	0	IC805	36	-0.4	IC809	36	-0.4
IC802	5	-0.8	IC805	37	-4.9	IC809	37	-4.9
IC802	6	0	IC805	38	0.1	IC809	38	0.1
IC802	7	-1.1	IC805	39	-2.0	IC809	39	-2.0
IC802	8	-0.5	IC805	40	0.2	IC809	40	0.2
IC802	9	-5.0	IC805	41	0	IC809	41	0
IC802	10	0.5	IC805	42	GND	IC809	42	GND
IC802	11	-0.9	IC805	43	0	IC809	43	0
IC802	12	-0.9	IC805	44	-0.8	IC809	44	-0.8
IC802	13	0.3	IC805	45	0	IC809	45	0
IC802	14	1.2	IC805	46	0.1	IC809	46	0.1
IC802	15	GND	IC805	47	0	IC809	47	0
IC802	16	-1.7	IC805	48	0	IC809	48	0
IC802	17	1.2	IC805	49	0	IC809	49	0
IC802	18	-1.5	IC805	50	0	IC809	50	0
IC803	1	0	IC806	1	0	IC810	1	GND
IC803	2	0	IC806	2	-0.8	IC810	2	GND
IC803	3	0	IC806	3	0	IC810	3	-13.0
IC803	4	0.1	IC806	4	-1.1	IC810	4	-14.2
IC803	5	0.9	IC806	5	-0.4	IC810	5	-14.2
IC803	6	0	IC806	6	0	IC810	6	0
IC803	7	-1.1	IC806	7	-1.1	IC810	7	0
IC803	8	-0.5	IC806	8	-0.5	IC810	8	-14.2
IC803	9	-5.0	IC806	9	-0.9	IC810	9	-14.2
IC803	10	0.5	IC806	10	0.3	IC810	10	0
IC803	11	-0.9	IC806	11	4.6	IC810	11	4.6
IC803	12	-0.9	IC806	12	0.2	IC810	12	-14.2
IC803	13	0.3	IC806	13	0.2	IC810	13	-14.2
IC803	14	1.2	IC806	14	-2.0	IC810	14	-14.2
IC803	15	GND	IC806	15	0	IC810	15	0
IC803	16	-1.7	IC806	16	0.1	IC810	16	0.1
IC803	17	1.2	IC806	17	0	IC810	17	-14.2
IC803	18	-1.5	IC806	18	-0.8	IC810	18	-14.2
IC803	19	0.1	IC806	19	0	IC810	19	0
IC803	20	-0.5	IC806	20	-0.5	IC810	20	0
IC803	21	5.0	IC806	21	5.0	IC810	21	5.0
IC803	22	0	IC806	22	0	IC810	22	0
IC803	23	-0.4	IC806	23	-0.4	IC810	23	-14.2
IC803	24	0.1	IC806	24	0.1	IC810	24	-14.2
IC803	25	0	IC806	25	0	IC810	25	0
IC803	26	0.1	IC806	26	0.1	IC810	26	-11.3
IC803	27	0	IC806	27	0	IC810	27	GND
IC803	28	0.1	IC806	28	0.1	IC810	28	GND
IC803	29	0	IC806	29	0	IC810	29	GND
IC803	30	-0.5	IC806	30	-0.5	IC810	30	-4.9
IC803	31	0	IC806	31	0	IC810	31	-4.9
IC803	32	0	IC806	32	0	IC810	32	-4.9
IC803	33	0	IC806	33	0	IC810	33	-4.9
IC803	34	0	IC806	34	0	IC810	34	-4.9
IC803	35	0	IC806	35	0	IC810	35	-4.9
IC803	36	0	IC806	36	0	IC810	36	-4.9
IC803	37	0	IC806	37	0	IC810	37	-4.9
IC803	38	0	IC806	38	0	IC810	38	-4.9
IC803	39	0	IC806	39	0	IC810	39	-4.9
IC803	40	0	IC806	40	0	IC810	40	-4.9
IC803	41	0	IC806	41	0	IC810	41	-4.9
IC803	42	GND	IC806	42	GND	IC810	42	-4.9
IC803	43	0	IC806	43	0	IC810	43	-4.9
IC803	44	0	IC806	44	0	IC810	44	-4.9
IC803	45	0	IC806	45	0	IC810	45	-4.9
IC803	46	0	IC806	46	0	IC810	46	-4.9
IC803	47	0	IC806	47	0	IC810	47	-4.9
IC803	48	0	IC806	48	0	IC810	48	-4.9
IC803	49	0	IC806	49	0	IC810	49	-4.9
IC803	50	0	IC806	50	0	IC810	50	-4.9

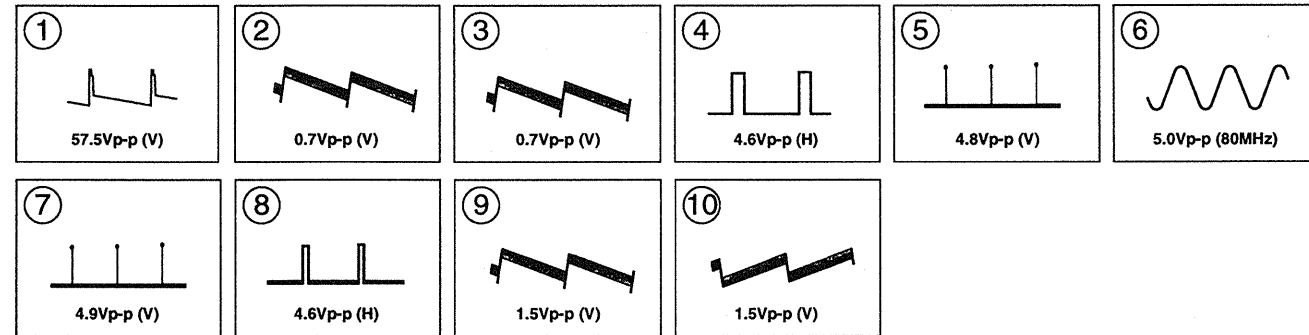
E BOARD TRANSISTOR VOLTAGE LIST

REF.	NO.	VOL.
Q501	B	-0.6
Q501	E	GND
Q501	C	48.1
Q502	B	-0.1
Q502	E	GND
Q502	C	137.5
Q503	B	6.9
Q503	E	0.5
Q503	C	0
Q504	B	0
Q504	E	0
Q504	C	450.0
Q506	B	1.7
Q506	E	1.2
Q506	C	12.3
Q507	B	12.3
Q507	E	12.3
Q507	C	660
Q508	B	1.1
Q508	E	3.5
Q508	C	8.3
Q701	B	0.7
Q701	E	GND
Q701	C	0
Q702	B	2.3
Q702	E	GND
Q702	C	4.8
Q801	B	2.3
Q801	E	1.8
Q801	C	5.0
Q802	B	6.0
Q802	E	7.5
Q802	C	1.6
Q803	B	2.3
Q803	E	1.9
Q803	C	5.0
Q804	B	2.3
Q804	E	1.9
Q804	C	-5.0
Q805	B	1.5
Q805	E	0.9
Q805	C	12.3
Q806	B	2.3
Q806	E	1.9
Q806	C	5.0
Q807	B	0.6
Q807	E	1.9
Q807	C	4.0
Q808	B	0.6
Q808	E	GND
Q808	C	1.5
Q809	B	-14.2
Q809	E	-14.2
Q809	C	-13.1
Q810	B	-14.2
Q810	E	-14.2
Q810	C	-13.1
Q811	B	0.1
Q811	E	GND
Q811	C	0.4
Q812	B	0
Q812	E	0
Q812	C	0.1
Q505	D	10.2
Q505	G	20.0
Q505	S	GND

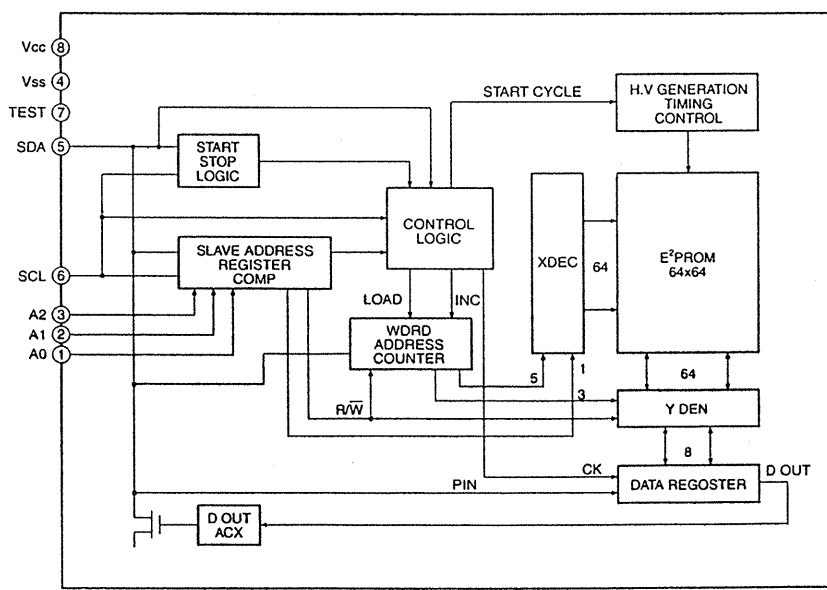
All voltages are in V.

\*All voltages are in V.  
\*Pin numbers which are not described are not used.

**D BOARD WAVEFORMS**



**D BOARD : IC1702 ST24C08FM6TR**



**D BOARD IC VOLTAGE LIST**

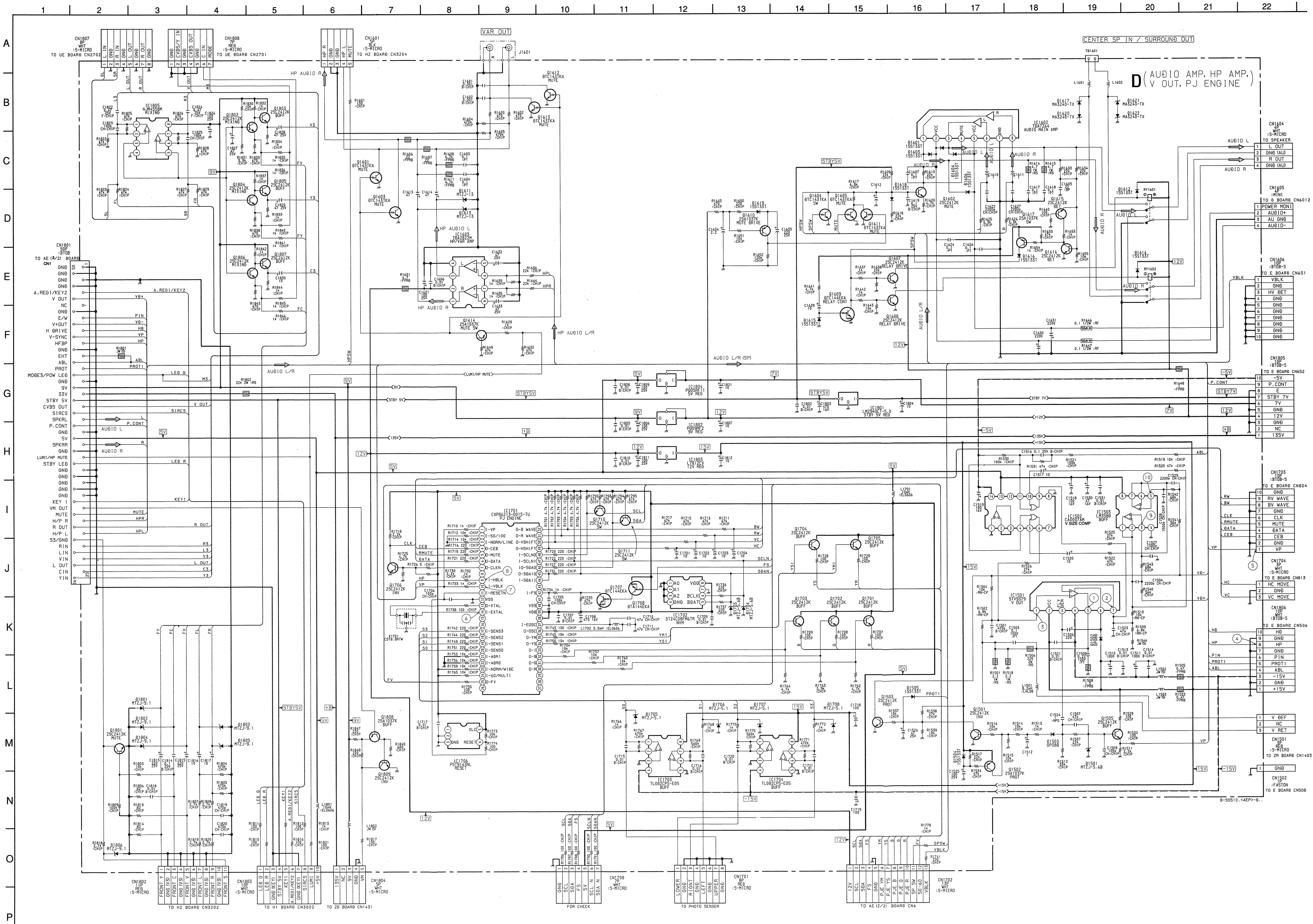
REF. NO.	VOL.	REF. NO.	VOL.
IC1501	1 1.1	32 0	
2 14.4	34 0.1		
3 -13.1	35 0.1		
4 -14.3	36 2.8		
5 0.2	37 2.8		
6 14.3	38 5.0		
7 1.1	39 5.0		
IC1502	1 GND	40 GND	
2 0	42 4.9		
3 0	44 4.8		
4 0.1	45 4.8		
5 0.1	46 4.4		
6 0.1	47 4.7		
8 GND	48 4.3		
9 0	49 2.2		
10 0.1	50 2.3		
11 -0.4	51 2.3		
13 5.0	52 2.0		
14 -4.9	IC1702	1 GND	
IC1503	1 3.1	2 GND	
2 3.1	3 GND		
3 3.1	4 GND		
4 GND	5 4.8		
5 3.0	6 4.8		
6 3.0	7 GND		
7 3.0	8 5.0		
8 5.0	IC1703	1 2	
IC1602	1 0	2 0	
2 23.0	3 GND		
3 0	4 -14.4		
4 20.5	5 GND		
5 -23.0	6 0		
6 0	7 5.8		
7 GND	8 14.6		
8 0	IC1704	1 0.3	
IC1603	1 4.1	2 0	
2 9.0	3 GND		
3 4.1	4 -14.4		
4 GND	5 GND		
5 0.8	6 0		
6 0	7 2.9		
7 0	8 14.6		
8 0.6	IC1706	2 GND	
IC1701	1 0.2	3 GND	
2 0	4 4.9		
3 0	5 5.0		
4 4.7	IC1801	1 5.0	
5 5.0	G GND		
6 0.2	O 7.0		
7 0.2	IC1802	1 13.8	
8 0.7	GND		
9 0.2	O 9.1		
10 0.2	O 9.1		
11 5.0	IC1803	1 14.6	
12 GND	G GND		
13 2.4	O 12.1		
14 2.1	O 6.7		
17 2.5	G GND		
18 0.2	O 5.0		
19 3.9	IC1805	1 4.8	
20 3.1	2 2.4		
21 0	3 2.4		
22 0	4 GND		
23 5.0	5 2.4		
24 5.0	6 2.4		
25 0	7 4.8		
30 0.1	8 9.0		
31 0			

**D BOARD TRANSISTOR VOLTAGE LIST**

REF.	VOL.	REF.	VOL.
Q1501	B 0.7	Q1701	E 0.2
C 0	C 5.0		
Q1502	E 14.6	Q1702	E 0.2
C 2.0	C 5.0		
B 0	B 0		
Q1505	E 0.2	Q1704	E 0
C 14.4	C 5.0		
B 0.7	B 0		
Q1601	E GND	Q1705	E 0
B 1.1	B 0.2		
Q1602	E 0.6	Q1706	E GND
C 20.7	C 4.7		
B 0.7	B 0		
Q1603	E GND	Q1707	E GND
C 0	C 5.0		
Q1604	E GND	Q1708	E 5.0
C 1.1	C 0		
Q1605	E GND	Q1710	E 4.7
C 0.1	C 4.7		
Q1607	E GND	Q1711	E 4.3
C 13.9	C 4.0		
B 0.3	B 0		
Q1608	E GND	Q1801	E GND
C 13.9	C 0		
B 0	B 2.4		
Q1609	E GND	Q1802	E 1.8
C 0.3	C 5.0		
B 13.9	B 5.0		
Q1610	E 13.7	Q1803	E 4.3
C 0.1	C 9.0		
B 0	B 2.4		
Q1611	E GND	Q1804	E 1.7
C 0	C 5.0		
B 0.7	B 5.0		
Q1612	E GND	Q1805	E 4.4
C 0	C 9.0		
B 0.7	B 2.4		
Q1613	E GND	Q1806	E 1.8
C 0	C 5.1		
B 0.2	B 5.1		
Q1614	E 0.8	Q1807	E 4.4
B 0	B 5.8		
Q1615	E 0	Q1808	E 6.4
C 0.2	C 0.7		
B 0	B 0.7		
Q1616	E GND	Q1809	E GND
C 0.2	C 1.2		
E 11.7			
Q1617	E 11.8		
C 0.4			

All voltages are in V.

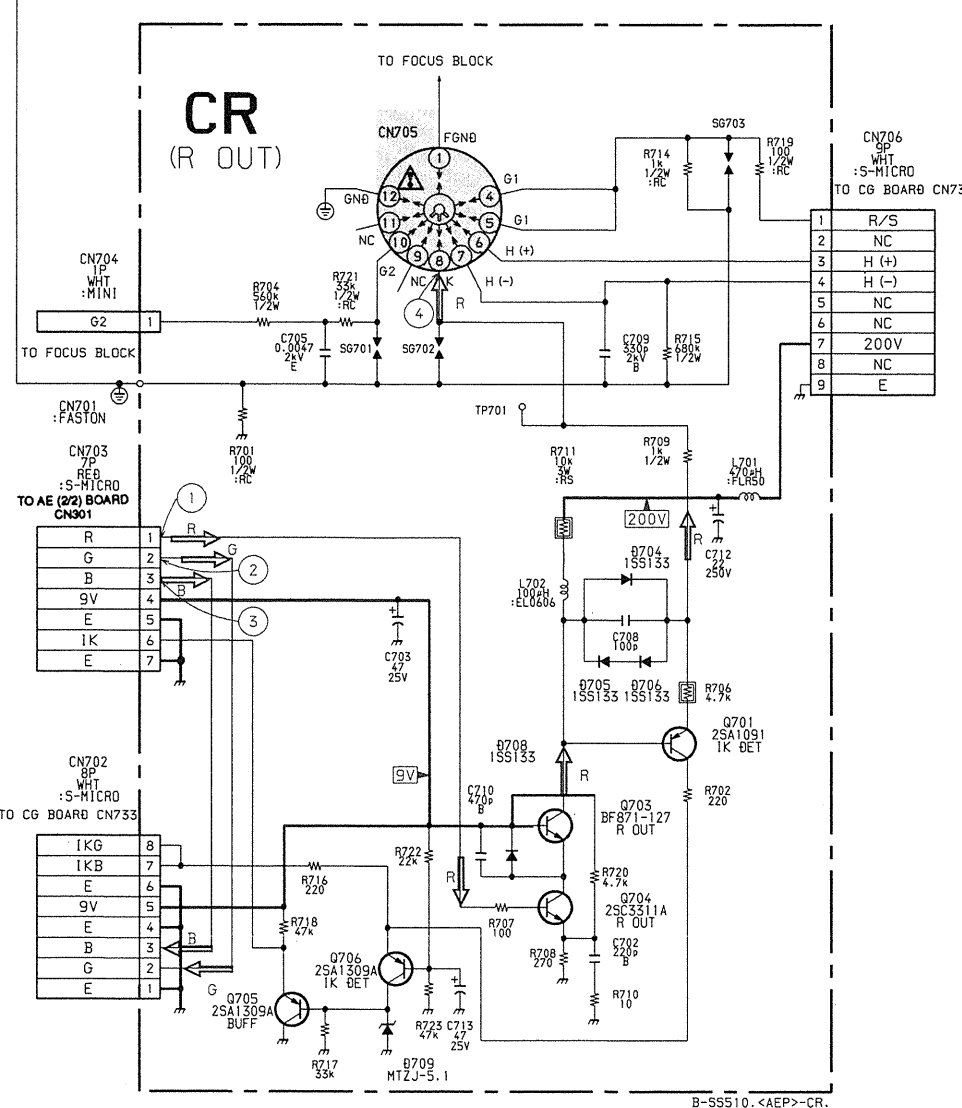
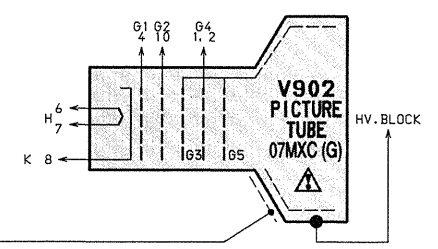
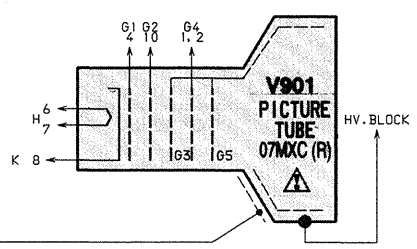
\*All voltage are in V.  
\*Pin numbers which are not described are not used.







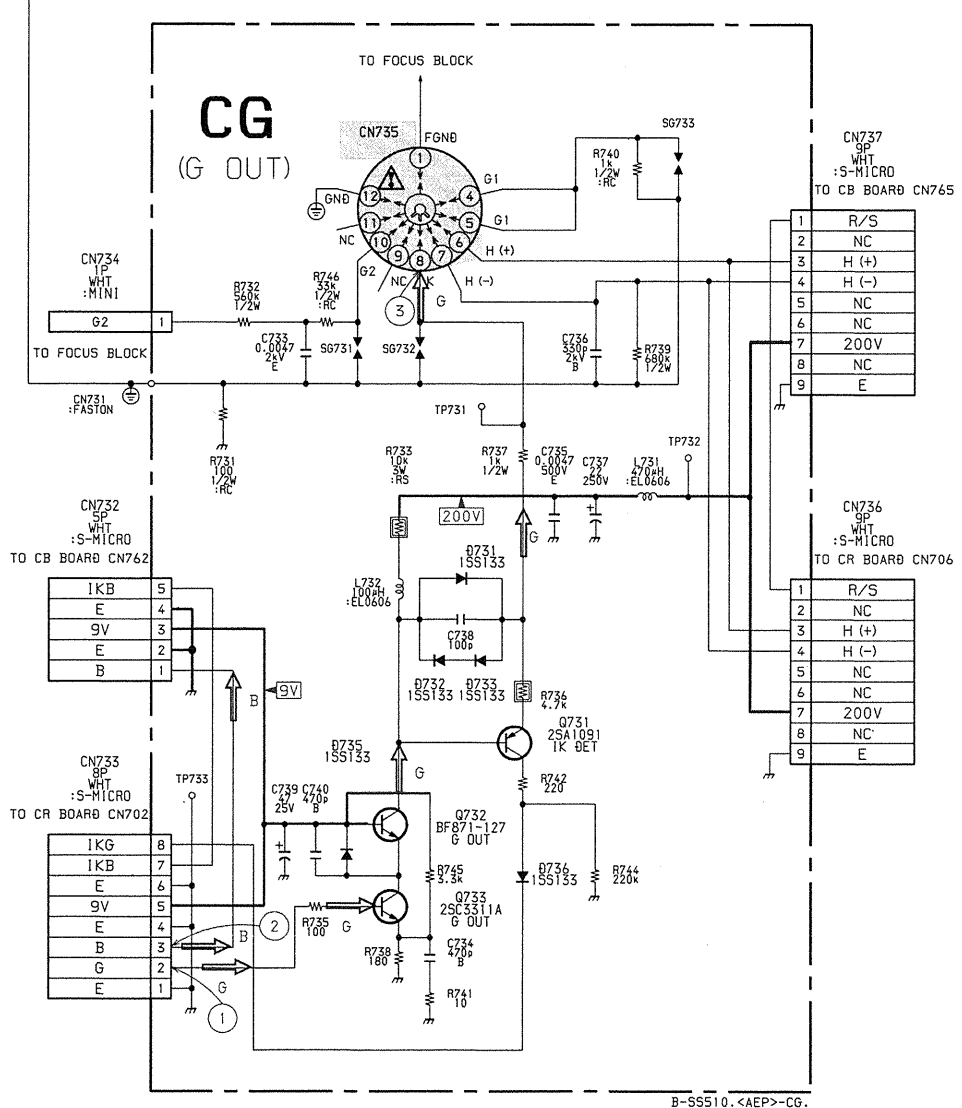




**CR BOARD TRANSISTOR VOLTAGE LIST**

REF.	VOL.
Q701	B 160.9
	E 156.9
	C 11.3
Q703	B 9.0
	E 8.5
	C 160.9
Q704	B 1.8
	E 1.2
	C 8.5
Q705	B 3.4
	E 3.2
	C GND
Q706	B 5.7
	E 10.9
	C 3.4

All voltages are in V.

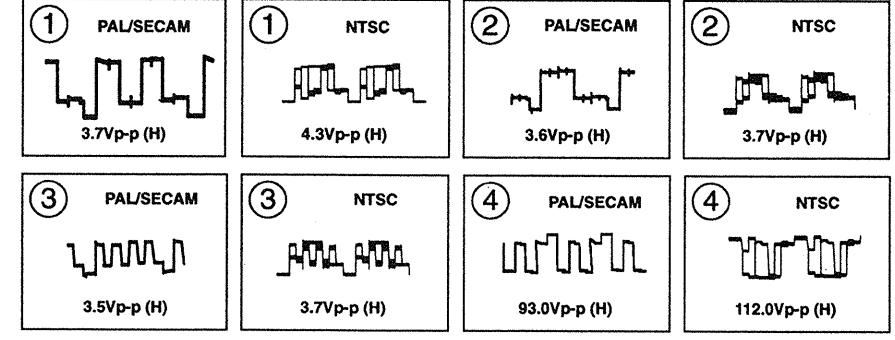


**CG BOARD TRANSISTOR VOLTAGE LIST**

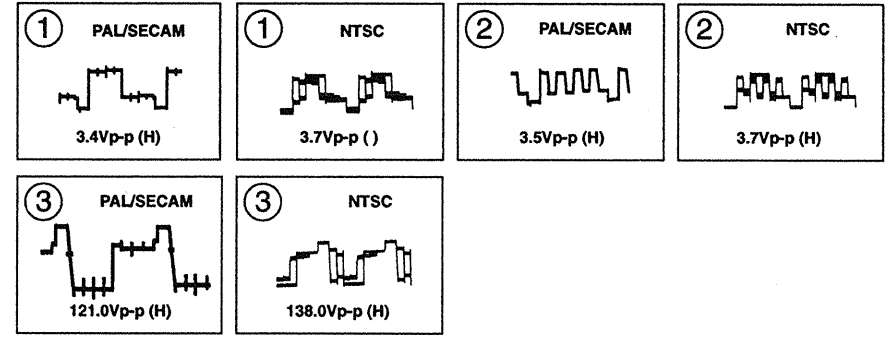
REF.	VOL.
Q731	B 150.4
	E 144.4
	C 11.5
Q732	B 9.0
	E 8.5
	C 150.4
Q733	B 1.8
	E 1.3
	C 8.5

All voltages are in V.

**• CR BOARD WAVEFORMS**

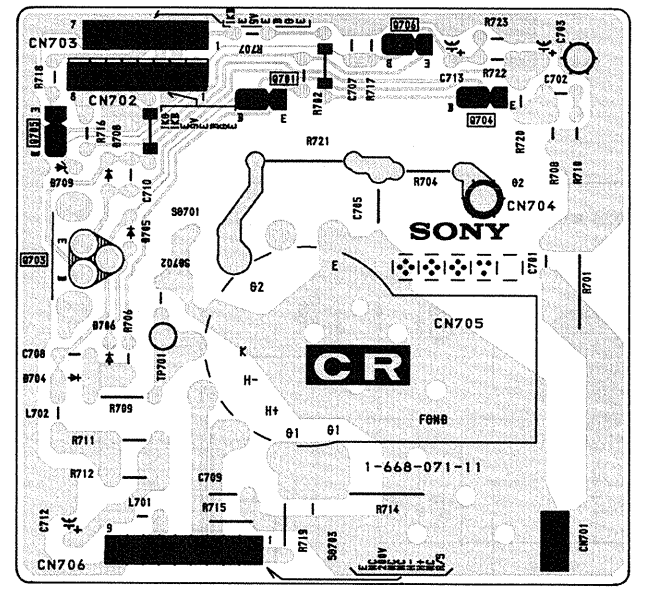


**• CG BOARD WAVEFORMS**



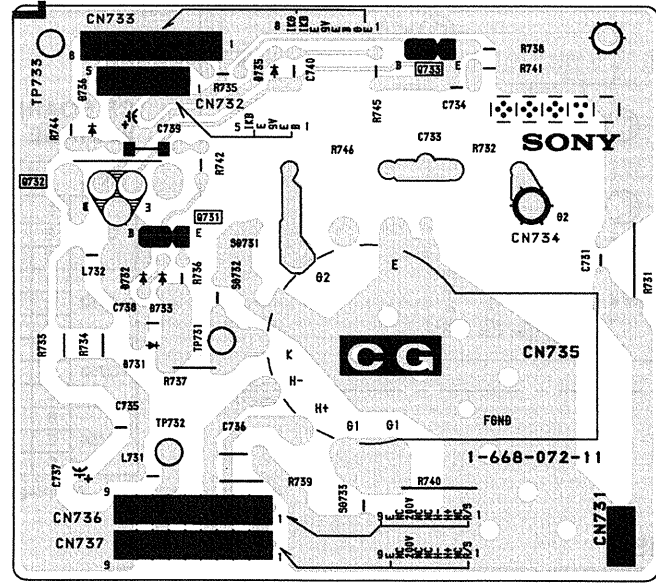
**CR [R OUT]**

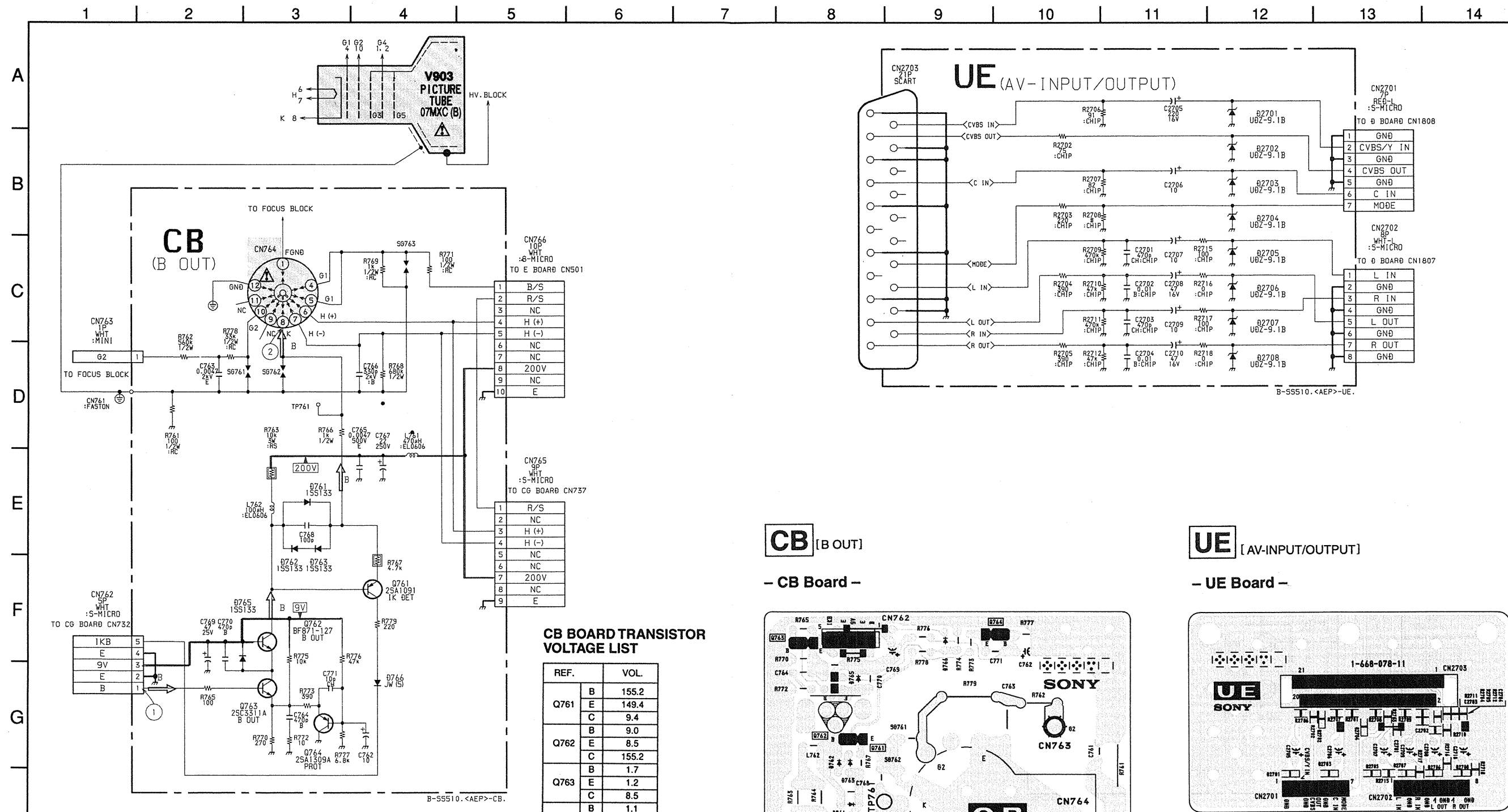
**- CR Board -**



**CG [G OUT]**

**- CG Board -**



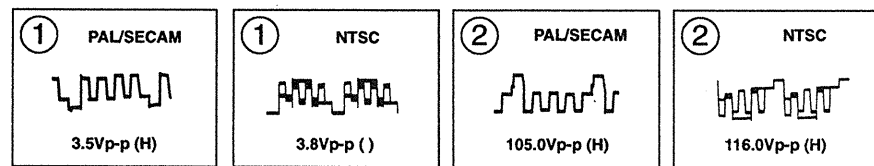


**CB BOARD TRANSISTOR VOLTAGE LIST**

REF.		VOL.
Q761	B	155.2
	E	149.4
	C	9.4
Q762	B	9.0
	E	8.5
	C	155.2
Q763	B	1.7
	E	1.2
	C	8.5
Q764	B	1.1
	E	1.2
	C	GND

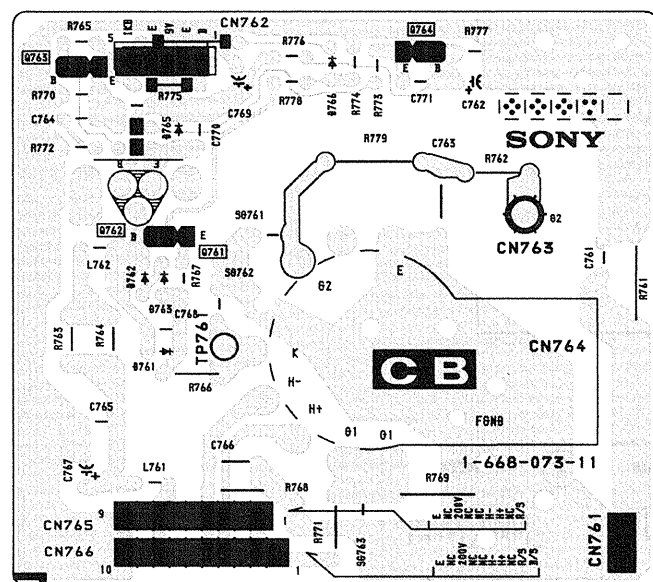
All voltages are in V.

**• CB BOARD WAVEFORMS**



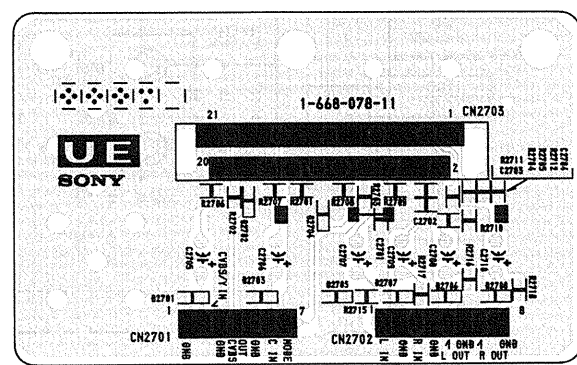
**CB** [B OUT]

- CB Board -



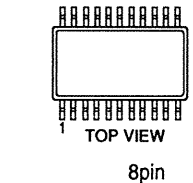
**UE** [AV-INPUT/OUTPUT]

- UE Board -

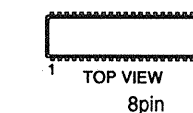


**5-5. SEMICONDUCTORS**

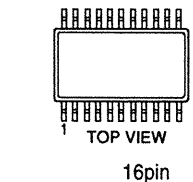
AT24E32M6TR  
CA0007AM  
ST24C08FM6TR  
TL082M  
μPC4558G2



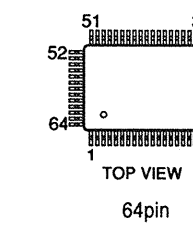
CA0007AD  
NJM2058D  
RC4560D  
TDA2822M  
TDA7264



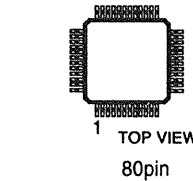
CXA1315M  
MC14052BDR2



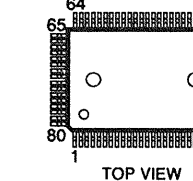
CXA2076Q-TL



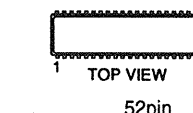
CXD2024AQ-T4  
SDA30C263-GEG



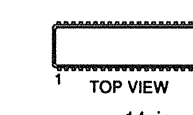
CXD2044Q-TL



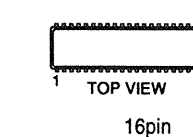
CXP86213-001S



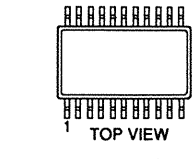
IR2112  
μPC339C



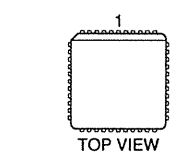
IR3M02A  
TDA4665T-T



MC14066BF



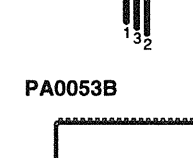
MSP3410D-PS-B4-T-ND  
SDA527CP-GEG



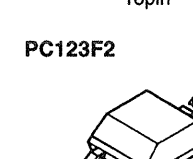
NJM7805FA  
NJM7905FA



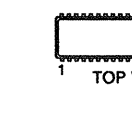
PA0053B



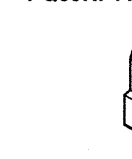
PC123F2



PM0002B



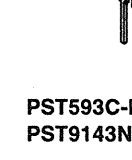
PQ05RF11



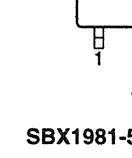
PQ09RF2  
TA7812S  
UPC2405HF



PST593C-MMP-4P  
PST9143NL



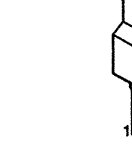
SBX1981-51



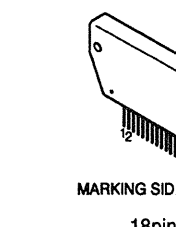
SE135N



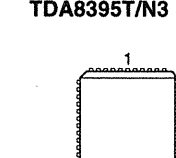
STV9379



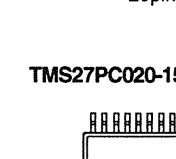
STK392-150



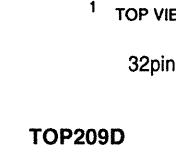
TDA8395T/N3



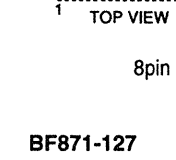
TMS27PC020-15FMRW101



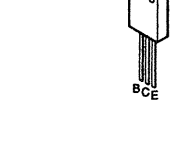
TOP209D



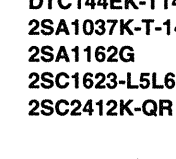
BF871-127



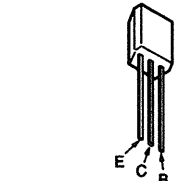
DTA144EK-T146  
DTC143TKA-T146  
DTC144EK-T146  
2SA1037K-T-146-R  
2SA1162G  
2SC1623-L5L6  
2SC2412K-QR



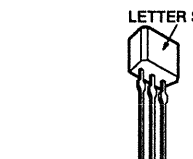
DTA144EK-T146  
DTC143TKA-T146  
DTC144EK-T146  
2SA1037K-T-146-R  
2SA1162G  
2SC1623-L5L6  
2SC2412K-QR



DTC144ESA-TP



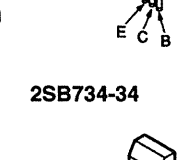
2SA1175-HFE  
2SC2785-HFE



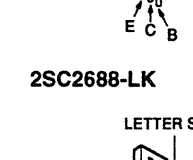
2SA1208  
2SC1091-O



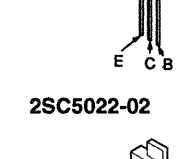
2SB734-34



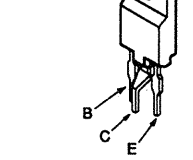
2SC2688-LK



2SC5022-02



2SC4632LS-CB7  
2SD2539 (LBSony-1)

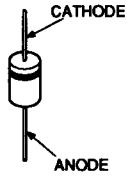




2SK2251-01-F119

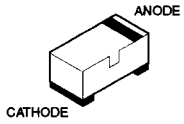


ERC06-15S  
ERD29-08J  
S2LA20F

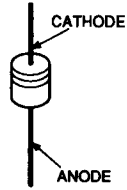


MTZJ-13  
MTZJ-30B  
MTZJ-7.5B  
RD13ES-B2  
RD20ES-B2  
RD3.6ES-B1  
RD39ES-B2  
RD5.1ES-B1  
RD5.1ES-B2  
RD5.6ES-B2  
RD7.5ES-B2  
1SS119-25  
1SS133T-77

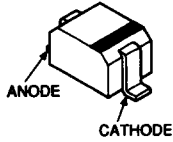
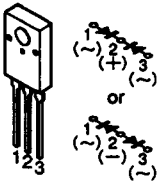
BAS216



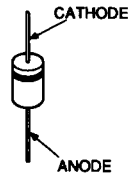
DTZ33B  
DTZ6.8B  
DTZ9.1  
RD5.6S-B  
UDZ-TE-17-6.8B  
1SS355



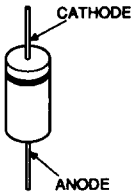
D10SC6M-4012



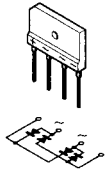
P6KE200AG23



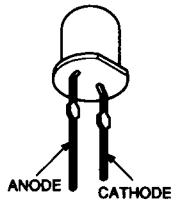
D2S4M  
D4SBS4-F



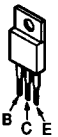
D6SB6OL  
RBA-406B



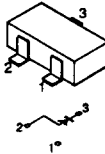
SLA-580LT3F



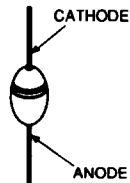
IRFI744G-LF



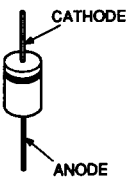
MA3030-H(TX)



U05G



EL1Z  
GP08D  
MTZ-T-77-9.1A  
S2L40F  
UF4005PKG23



MA3240-TX

